

Nutriplant[®] AG

Foliar Micronutrient Supplement

The molecular structure of Nutriplant[®] AG is smaller and lighter, allowing plants to absorb AG much faster and utilize more of it. Most other foliar feeds use a synthetic chelation, which makes them heavier and larger in molecular structure, and causes a longer process for the plant to absorb it.

Nutriplant AG is designed to be applied at the particularly vulnerable stages of crop development, to strengthen the plant against everyday environmental stress, leading to better yields and improved quality.

Nitrogen

(Essential for bud vigor and fruit set)

Phosphorus

(Hastens maturity and improves quality)

Potassium

(Improves color and increases synthesis)

Sulfur

(Fruit set)

Boron

(Essential for bud vigor)

Cobalt

(Increases resistance to stress)

Copper

(Contributes to color and flavor development)

Iron

(Promotes flowering and fruit set)

Manganese

(Aids in sugar metabolism)

Molybdenum

(Transport of phosphorus)

Zinc

(Fruit size)

Treated with
Nutriplant[®] AG

**Increases
Photosynthesis
by 16%**

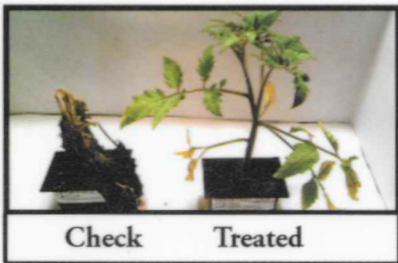
Untreated



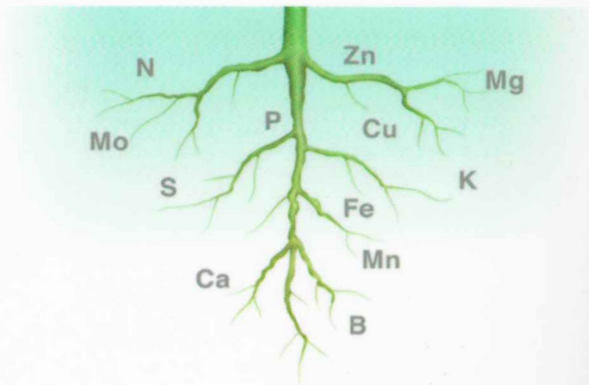
Nutriplant[®] AG's unique molecular structure allows it to penetrate the stomata and the epidermis.



Nutriplant AG® increased plant resistance to high temperatures (Tomato plant)
 Treatment:
 2 applications, then exposed to 116°F heat for 2 hours



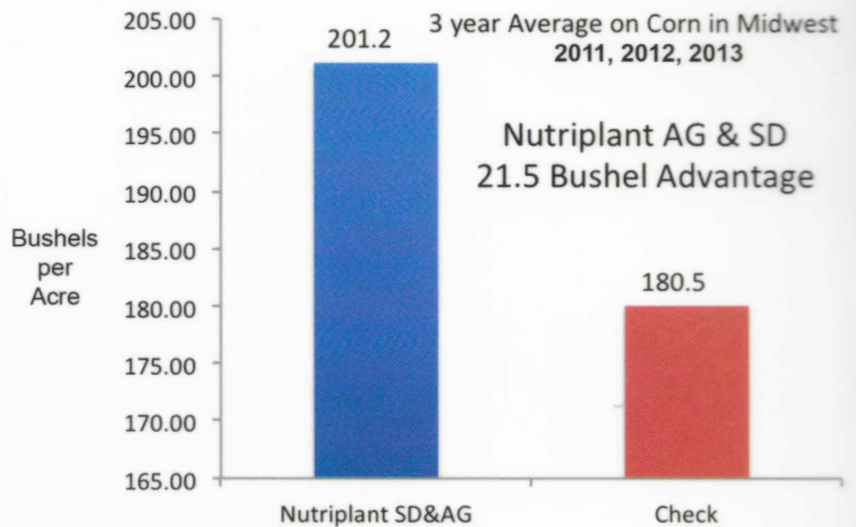
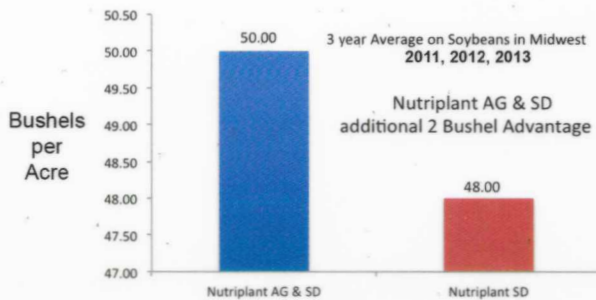
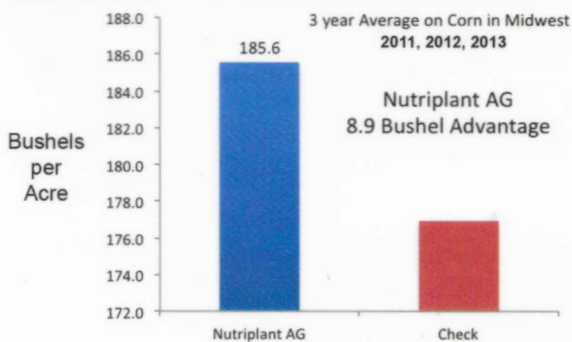
Nutriplant AG® increased plant resistance to low temperatures (Tomato plant)
 Treatment:
 2 applications, then exposed to 23°F for 2 hours



Macro Elements
 N - Nitrogen
 P - Phosphorous
 K - Potassium

Secondary Elements
 Ca - Calcium
 Mg - Magnesium
 S - Sulphur

Micro Elements
 Fe - Iron
 B - Boron
 Zn - Zinc
 Cu - Copper
 Mn - Manganese
 Mo - Molybdenum



Nutriplant AG® Recommended Application Rates

- Alfalfa** - 16 oz. / acre - 5 to 6 leaf stage after each cutting (4 applications)
- Corn** - 16 oz. / acre - 6 to 8 leaf stage or seed set / polination
- Soybeans** - 16 oz. / acre - pre-bloom or pod set
- Sugar Beets** - 16 oz. / acre - once at 8-10 leaf stage
- Cotton** - 8 oz. / acre (4 weekly applications)
- Melons** - 16 oz. / acre (3 applications at pre-bloom, fruit set, fruit color change)
- Wheat** - 16 oz. / acre - 6 to 8 leaf stage / green up
- Tomatoes** - 12 oz. / acre (3 applications at pre-bloom, fruit set, fruit color change)
- Watermelons** - 12 oz. / acre (3 applications)

Sitz AG Nutrients
 Phone: (816)716-5786
 E-mail: brian@sitzagmarketing.com
 www.sitzagnutrients.com