

NUTRIPLANT®

Forage Crops

Alfalfa, Clover, Groundcover, Pasture, etc.

NUTRIPLANT SEED TREATMENT

is applied to seed just prior to planting. It is a nutritional supplement to enhance seedling emergence and growth. The product is available in two forms: powder **NUTRIPLANT SD** packaged in 25 pound pails and liquid **NUTRIPLANT SL** packaged in 6 liter jugs.

With **NUTRIPLANT SEED TREATMENT**,
Farmers Report:

- Quicker emergence
- Better stands
- Stronger, bigger root systems
- Increased yields
- Increased feed value

NUTRIPLANT AG

is a foliar nutritional supplement to enhance crop growth. The genetic potential for any crop is never reached due to stress encountered during the growing season. Plants are more vulnerable and use more nutrients at particular stages of development. **NUTRIPLANT AG** is designed to be applied at these particular stages, to strengthen the plant against everyday environmental stress, leading to better yields and improved quality. The product is available in 2.5 gallon jugs and 30 gallon drums.

With **NUTRIPLANT AG**, Farmers Report:

- Increased resistance to stress
- Stronger stems
- Reduced lodging
- Increased yields

NUTRIPLANT SEED TREATMENT and **NUTRIPLANT AG** are intended as supplements to a regular fertilizer program, and will not by themselves provide all the nutrients normally required by plants.

Distributed by Access Business Group LLC
Ada, MI 49355
Revised 07/08
For use in the U.S.A. only



Average U.S.A. Yield Increase

9% for
NUTRIPLANT SD/SL

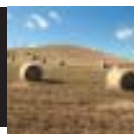
10.8% for
NUTRIPLANT AG



- Easy to Apply
- Cost Effective

T
N
A
L
P
I
R
T
U
N

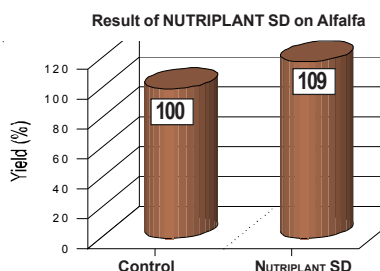
NUTRIPLANT® SD/SL



NUTRIPLANT® AG

Results on Alfalfa

The average worldwide yield increase with **NUTRIPLANT SD** is 9% (based on 5 trials over 3 years).



Economic Benefit

\$42.00 per acre increase

Based on an average yield of 3.35 ton/acre, 9% increase, and an average price of \$140.00/ton.

Application Rates

Apply **NUTRIPLANT SD** at 4 oz/100 lb of seed.
Apply **NUTRIPLANT SL** at 2 fl oz/100 lb of seed.

Method of Application

Apply **NUTRIPLANT SD** to the seeds before planting. Application should be made in such a way that all seeds are thoroughly coated. **NUTRIPLANT SD** can be applied right in the planter box or hopper. Properly treated seeds will have a fine coating of powder.

Apply **NUTRIPLANT SL** using commercial equipment. Mix seeds until dry and do not stick.

Compatibility

NUTRIPLANT SD/SL is compatible with most seed treatments including inoculums, fungicides and insecticides. It can also be used on pelletized seed.

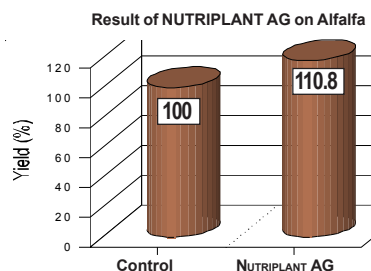
Storage

Store **NUTRIPLANT SD** in a dry place at a temperature below 110°F. Do not store in direct sunlight. Keep container tightly closed.

Store **NUTRIPLANT SL** at a temperature between 110°F and freezing. Keep container tightly closed. Do not store diluted product. Do not store in direct sunlight.

Results on Alfalfa

The average yield increase in the U.S.A. with **NUTRIPLANT AG** is 10.8% (based on 2 trials over 2 years).



Economic Benefit

\$51.00 per acre increase

Based on an average yield of 3.35 ton/acre, 10.8% increase, and an average price of \$140.00/ton.

Application Rate

Apply **NUTRIPLANT AG** at 16 fl oz/acre.

Application Timing

Apply 16 fl oz/acre at first growth when canopy coverage is reached, and after each cutting at canopy coverage.

Application

Shake well before using. To co-apply with herbicides, pesticides or fertilizers, dilute 1 part **NUTRIPLANT AG** with 5 parts water prior to mixing with pre-diluted chemicals. Apply as directed above. A small test area should be treated prior to large scale mixing to determine that no phytotoxicity or undesirable effects occur.

Spray diluted **NUTRIPLANT AG** evenly on foliage using any conventional spraying equipment. For best results, apply in evening or early morning. Avoid applying product under windy conditions. Heavy rain or overhead irrigation within 24 hours of application may reduce product effectiveness. See label for further information.

Storage

Store **NUTRIPLANT AG** at a temperature between 110°F and freezing. Keep container tightly closed. Do not store diluted product. Do not store in direct sunlight.

Sitz AG Nutrients
Phone: (816)716-5786
E-mail: brian@sitzagmarketing.com
www.sitzagnutrients.com