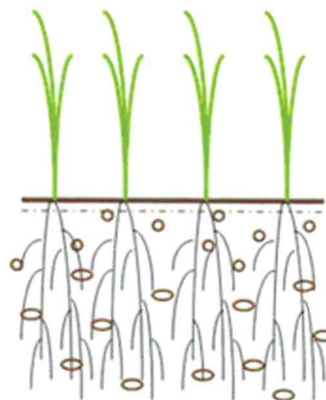


APSA 80[®]

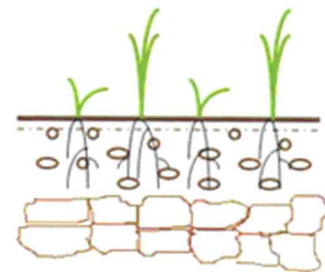
Non-Ionic Surfactant & All-Purpose Adjuvant

APSA-80 Adjuvant is an agricultural wetting agent. APSA-80 has three main uses: one as an irrigation aid to the soil, second as a soil compaction aid, and third as a spray adjuvant for use with herbicide and pesticide sprays. By lowering the surface tension of water, APSA-80 can increase the rate at which water soaks into soil, reduce water losses due to evaporation and runoff, and increase crop yields

As the soil becomes saturated, the water will be able to move easier through the compacted layers, including any tillage pans that have developed. If water can get through these layers, since root systems follow water, it allows the plants to get better access to that important subsoil moisture for better plant production.



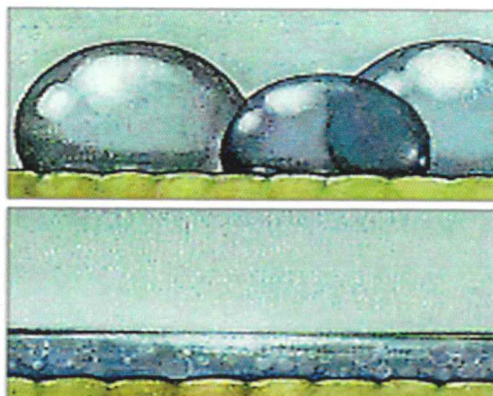
Well-structured soil



Compacted soil

APSA 80[®] helps reduce surface tension of water on plants.

These figures shows the difference between water droplets on the surface of a leaf, and the difference that APSA 80[®] makes on surface tension of water. APSA 80[®] helps to create a more even application of chemicals to all of your plants.



Benefits

Faster penetration of water into soil that improves infiltration rates up to 34%

Highly Concentrated non-ionic surfactant

Improves chemical effectiveness

Allows contact herbicide solutions to penetrate the waxy coating of weed leaves faster

More effective with coverage, penetration and retention of post-emergent herbicides

Works as a great agitator for clay based chemicals

Reduces surface tension of water

Reduces irrigation expense

Reduces erosion due to water run off and evaporation

Improves weed and disease control

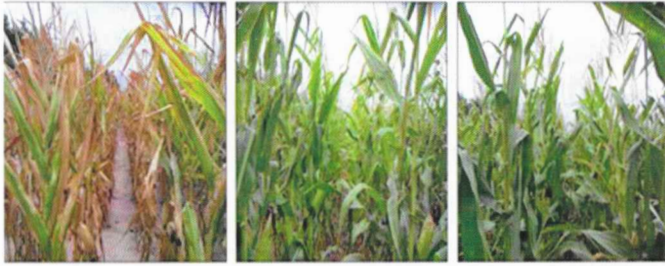
Helps keep pesticides in solution

Low cost per acre

Non-corrosive/
Bio-degradable

Dryland Corn

Irrigation Research Foundation 2007
Growing Season Rainfall = 10.33 Inches



Control
78.4 bu/Acre

APSA-80 15 oz/Acre
92.8 bu/Acre

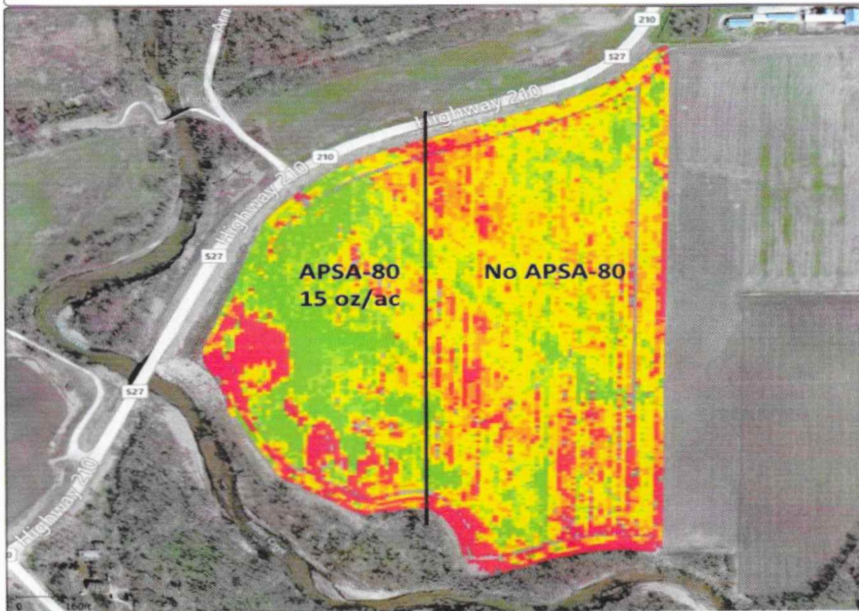
APSA-80 30 oz/Acre
108.5 bu/Acre



With APSA 80

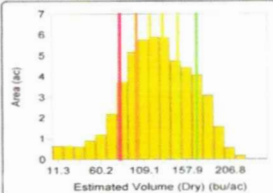
No APSA 80

Grain Harvest 2012 - Home(CORN)



Grower : Plunkett Farms
Farm : Eatwell
Field : Home
Year : 2012
Operation : Grain Harvest
Crop / Product : CORN
Op. Instance : Harvest - 1
Area : 51.25 ac
Avg. Yield : 124.19 bu/ac
Avg. Moisture : 18.46 %
11/6/2012 6:11:41 PM

Estimated Volume (Dry) (bu/ac)	
169.32 - 395.12 (7.586 ac)	
148.68 - 169.32 (7.524 ac)	
131.50 - 148.68 (7.352 ac)	
116.64 - 131.50 (7.288 ac)	
101.03 - 116.64 (7.202 ac)	
82.25 - 101.03 (7.140 ac)	
5.20 - 82.25 (7.161 ac)	

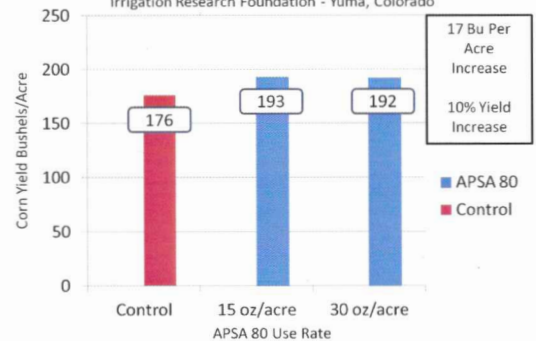


Ag Leader Technology SMS Advanced

Page 11 of 23

Effect of APSA 80 on Corn Yield

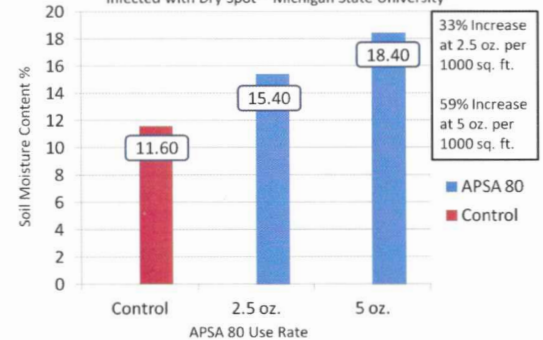
Compacted Soil - Nine Year Average
Irrigation Research Foundation - Yuma, Colorado



\$93.50 increase per acre based on \$5.50 per bushel Corn

Effect of APSA 80 on Turf

Sandy Bluegrass Fairway Soil Moisture Content
Infected with Dry Spot - Michigan State University



33% Increase at 2.5 oz. per 1000 sq. ft.
59% Increase at 5 oz. per 1000 sq. ft.



APSA-80®

Recommended Application Rates

Soil Compaction Aid: 16-32 oz. per acre in 10 gal. of water

Herbicides: 2.5-5 oz. per acre in 10 gal. of water

Insecticides/Fungicides: 2.5-5 oz. per acre in 100 gal. of water

Irrigation Aid: 2.5-5 oz. per acre in 10 gal. of water

Turf Dry Spot Control: 2.5-5 oz. per 1000 ft³ in 3.5 gal. or more of water

Sitz AG Chemicals, LLC
Phone: (816)716-5786
E-mail: brian@sitzagmarketing.com
www.sitzagchemicals.com